

# Setaflash CCC 35600-0

## Continuously Closed Cup Flash Point

ASTM D6450; ASTM D7094; IP 620; ISO 24966

- Small sample size (1-2 mL)
- Electric arc ignition
- Wide temperature range in a single model
- Automatic flash detection
- Removable cup, easy to clean
- Unique automatic magnet stirrer detection
- Automatic barometric correction
- Built-in Peltier cooling
- Built-in fire extinguisher
- Optional external chiller connection
- Emergency stop button
- Real time display of test progress
- Custom methods and profiles
- Large 9.7" touchscreen
- Internal results storage
- LIMS, network, USB and serial connectivity
- Statistical Quality Control software



Fuels • Lubricants • Biodiesel • SAF  
Solvents • Paints & Varnishes • Chemicals  
Flavours & Fragrances • Essential Oils

# Setaflash CCC

## Continuously Closed Cup Flash Point

ASTM D6450; ASTM D7094; IP 620; ISO 24966

The Setaflash CCC is a state of the art Continuously Closed Cup flash point tester designed to deliver fast, accurate and reliable results with minimal sample volume, reducing waste and hazard. 1 mL sample volume for ASTM D6450 and 2 mL sample volume for ASTM D7094.

The Setaflash CCC offers unmatched performance in a compact, modern design. Combining advanced safety features, automation and a user-friendly touchscreen interface to streamline flash point testing.

Flash points can be determined in a wide temperature range, -5 °C to 420 °C as a standalone unit or -35 °C to 420 °C with an external chiller.

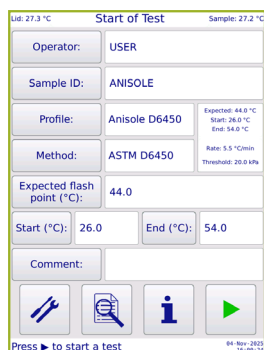
To further enhance laboratory efficiency, the Setaflash CCC features a quick test function that pre-heats the instrument to the desired temperature before the sample is introduced, minimising downtime and maximising throughput. After testing, the automatic cooling mode rapidly reduces the temperature using Peltier assisted cooling, ensuring the instrument is ready for the next sample in the shortest possible time.

All routine functions are accessed by an intuitive menu system on a super-size industrial 9.7" colour touchscreen. Test progress is clearly displayed, with large format characters for long range viewing.

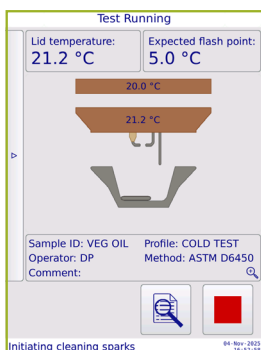
Statistical Quality Control (SQC) software provides detailed analysis of test results, calculated mean, standard deviation, standard error, repeatability and plot of results in accordance with ASTM D6299 Statistical Standard, meeting the requirements of ISO 17025.



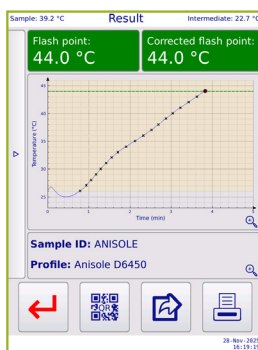
## Operator Interface



> Enter test details



> Run test



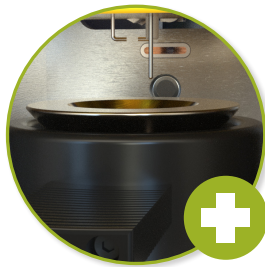
> View test results

For more information please visit: [www.stanhope-seta.co.uk](http://www.stanhope-seta.co.uk)

# Setaflash CCC

## Continuously Closed Cup Flash Point

ASTM D6450; ASTM D7094; IP 620; ISO 24966

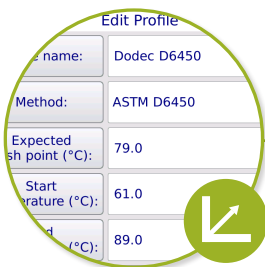
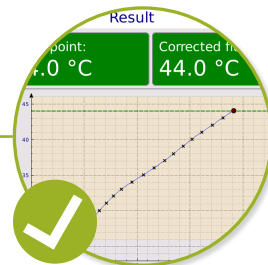


### Operator Safety

- Optical fire sensor provides a high level of fire protection, inert gas is automatically deployed around the cup and cup area if persistent fire is detected
- The fire extinguisher can also be activated manually at any time
- Additional safety features include PRT checks, safety arcs before starting, over-temperature cut-out and emergency stop

### Ease Of Use

- Quick, simple operation
- Intuitive user menu with colour touch screen operation
- Real time display of test progress
- Large capacity memory allows storage of test profiles, operator names, test methods and results
- Test status and results are graphically displayed
- Data format is compatible with most PC spreadsheets and a USB port allows results to be saved to portable memory devices
- QR code data transfer

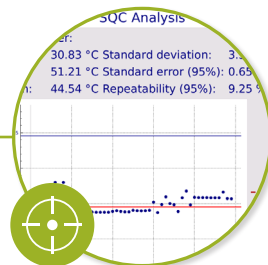


### Enhanced Test Throughput

- Unique test profiles enable the test to be set up and repeated quickly without re-entering the same information
- Once a test profile is stored to memory, a user can select this option without the need to program test parameters
- The removable cup is easy to clean, for minimal down time between tests
- Quick test function pre-heats the instrument to the desired temperature before the sample is introduced

### Precision and Accuracy

- Automatic flash point testing ensures test repeatability
- Automatic magnet stirrer detection ensures test validity
- Automatic barometric correction
- Password protected 'calibration' mode allows verification of instrument performance
- SQC software to maintain instrument accuracy and enable product quality monitoring



For more information please visit: [www.stanhope-seta.co.uk](http://www.stanhope-seta.co.uk)

# Setaflash CCC

## Continuously Closed Cup Flash Point

ASTM D6450; ASTM D7094; IP 620; ISO 24966

Setaflash CCC 35600-0 Technical Specifications	
<b>Operation</b>	
Temperature range	-5 °C to 420 °C -35 °C to 420 °C with external chiller
Ignition system	Electric arc
Flash detection	Pressure increase $\geq$ 20 kPa
Ramp rate	5.5 °C (ASTM D6450) 2.5 °C (ASTM D7094)
Fire detection	Optical
Sample size	1 mL (ASTM D6450 (test cup available as an accessory)) 2 mL (ASTM D7094 (test cup included))
Cooling method	Peltier (liquid cooled with chiller)
Stirrer	Magnetic with detection
<b>Measurement</b>	
Units of temperature	°C or °F (user selectable)
Barometric pressure correction	Automatic correction with built-in pressure sensor
<b>Data Management</b>	
Information	Real time display on screen of test progress and results
Internal memory - parameters	Programmable test profiles, sample IDs, operator names and test methods
Internal memory - results	In excess of 200,000 test results
Statistical Quality Control (SGC)	ASTM D6299 Statistical Standard meeting requirements of ISO 17025
Power button	Illuminated power button gives status information at a quick glance
<b>Safety</b>	
Fire extinguisher	Requires inert gas
Emergency stop button	Independent emergency stop button can be positioned and deployed at a safe distance away from the instrument
Pre-test arcs	Provides early indication of ignition risk when testing highly volatile samples
Over temperature cut-out	Automatically disables the heating circuit if the lid temperature exceeds a safe limit
<b>Power Requirements</b>	
Voltage	110/240 VAC, 50/60 Hz, Auto-sensing universal power supply
Power	200 W
<b>Interface Specifications</b>	
Display	9.7" LCD colour touchscreen (resistive - can be used with gloves), 800 x 600 pixel, USB keyboard, mouse and bar code scanner
Data input/output	Connection to LIMS (via: Ethernet RJ45), USB, RS232C, test results can be emailed, saved to memory stick or transferred via QR code
Virtual Network Computing (VNC) system	Allows operation of the instrument remotely for looking at test results and accessing instrument set up
Printer options	USB, Ethernet or RS232C
Language	User selectable - English (default)
<b>Physical</b>	
Dimensions (HxWxD)	43 x 24.9 x 32 cm
Weight	16.3 kg

## Minimal Servicing

### 6 Monthly:

- Verify fire extinguisher system
- Pressure verification

### Yearly:

- Pressure calibration
- Temperature calibration
- Instrument verification using Certified Reference Material