

# Seta Autowash

## Foaming Characteristics

ASTM D892; D6082; IP 146



- Automatic and unattended cleaning of diffuser and air tube
- Up to 10 factory washing programs available
- Up to 2 solvents can be used
- No operator exposure to solvents

## Automatic Diffuser Washing

Current cleaning techniques for either aluminium grain or metal type diffusers, pose a number of disadvantages for the busy laboratory. Not only is it time consuming, but the current process is both solvent and personnel intensive. It is widely recognised that the performance of the diffuser is affected by the cleaning process. Appendix X1 and in section 9.1.2 ASTM D892 provides guidance on a procedure for cleaning the diffusers. This includes a flush with toluene, heptane and dry air sequence which is repeated 5 times.

## Seta Autowash

ASTM D892; D6082; IP 146

The Seta Autowash is a bench top unit that automatically cleans and dries Diffusers using one or two solvents without removing the air tube. Automatic wash programmes provide a consistency of cleaning that has significant benefits in assisting to provide reliable and repeatable foam test results.

## Key Features

- Automatic & unattended cleaning of diffuser and air tube
- Up to 10 factory washing programs available
- Up to 2 solvents can be used
- Low solvent use
- No operator exposure to solvents
- Quick and simple operation
- Unidirectional flow

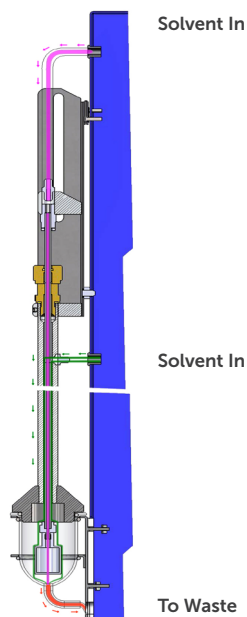
## Principles of Operation

During cleaning, solvent and air are drawn through the diffuser in one direction only, avoiding particles or used solvent entering the diffuser and blocking the pores.

The solvent system is enclosed to prevent leakage of vapour.

Once the Autowash cleaning program has been started it can be left unattended and sounds an audible warning when the programme has finished.

Less than one minute of operator time is needed to clean a diffuser, with user selectable cycle times ranging from 3 to 19 minutes and a choice of one or two solvent wash.



## Operator Sequence

### Step 1

Load diffuser into wash tube.



### Step 2

Select wash sequence on the control panel and press start!



## Washing Sequence

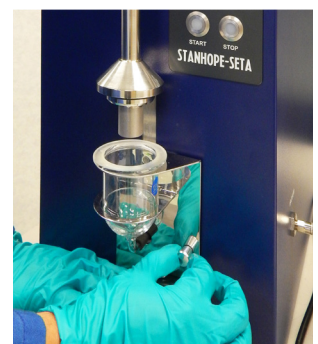
Solvent is then purged through the diffuser and flushed around the outer tube.

A dry sequence is performed after the wash sequence(s) are complete.



### Step 3

Test complete! Unlatch glassware and disconnect the diffuser.



## Technical Specifications:

Voltage/Power:	115V and 230V, 50/60Hz
Size (HxWxD)/ Weight:	89 x 24 x 31cm / 16kg

## Ordering Information:

Seta Autowash:	14024-2
Cylindrical Diffuser: Stainless Steel	14023-0
Diffuser: Cylindrical	14021-0

Supplied complete with vacuum pump and solvent containers.